

# **SUNCENT**

## **Mini Maxx V2**

### **Installation Manual**

 [suncenauto\\_official](#)

 [Suncenauto.com](#)

 [Suncenauto](#)

 [support@suncenauto.com](mailto:support@suncenauto.com)



[www.suncenauto.com](http://www.suncenauto.com)



**Mini Maxx**  
(Micro SD Cardin Mini Maxx)



**Mini Maxx Power Cable**



**OBD II Adapter**



**Windshield Mount**



**Mini USB Cable**



**HDMI Cable**



**USB Adapter**

## Included Accessories

- (1) Mini Maxx (Micro SD Cardin Mini Maxx)
- (2) Mini Maxx Power Cable
- (3) OBD II Adapter
- (4) Windshield Mount
- (5) Mini USB Cable
- (6) HDMI Cable
- (7) USB Adapter

## Tools needed

Multimeter (for measuring voltage)

## Necessary Checks Before Installation

### STEP 1

Measure the battery voltage and make sure it is  $\geq 12.5V$ .



Image 1

### STEP 2

Make sure there are no warning lights on the vehicle dashboard.



Image 2



Image 3

## STEP 3

Ensure that no other devices are connected to the OBDII interface before connecting the OBDII Adapter.



Image 4



Image 5

## Precautions During Installation

### STEP 1

Do not remove any emissions parts before installing the Tuner.

### STEP 2

Make sure the device has a stable power supply during installation. Do not disconnect power.

### STEP 3

Do not randomly turn the vehicle key position during installation, except for the steps required by the device during the installation process.

## Precautions During Installation

Example vehicle: 2012 F350 6.7 PowerStroke

Estimated installation time: Approximately 15 minutes

### STEP 1

Wiring connection diagram.

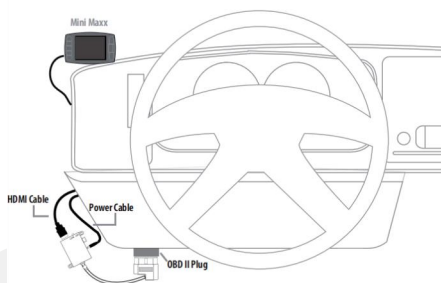


Image 6

### STEP 2

Turn the ignition key to the "ON" position. Do not start the engine.



Image 7

## STEP 3

The device enters the monitoring screen.



Image 8

## STEP 4

Select the vehicle model.

**Menu — Change Vehicle — Ford Diesel — 11-12 Ford 6.7 PowerStroke — YES**

Select the corresponding vehicle model according to the path above. After selection, the device will restart automatically. This process will take some time, about 10 seconds. Please wait patiently. During this time, the screen may **go black** and the device may make a “clicking” sound. Don't worry, this is normal. The device is loading the selected vehicle file.



Image 9

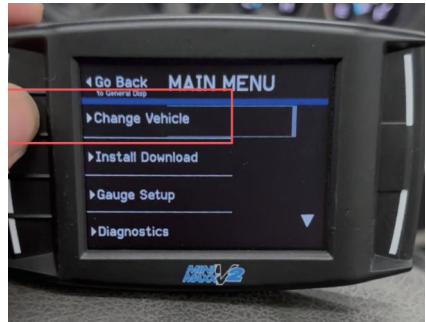


Image 10



Image 11

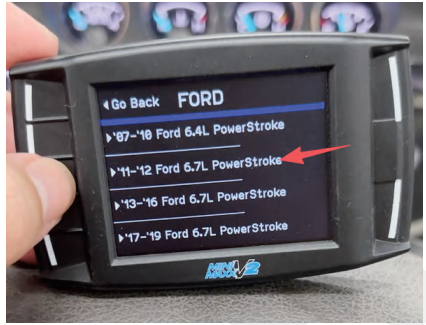


Image 12



Image 13



Image 14

## STEP 5

Confirm that the vehicle model has been selected successfully.

**Menu — Show Settings — Application — 11-12 Ford 6.7 PowerStroke**

Tap the **MENU** button in the upper-left corner to enter the menu. Press the lower-right button to scroll down, find the **"Show Setting"** option, and select it. Check the device information and confirm that the vehicle model has been changed to the corresponding model before proceeding to the next step.



Image 15



Image 16

## STEP 6

Install the program.

**Menu — Install Download — More — AGREE — CONTINUE — YES — Pre-load Tune**

Return to the menu page, scroll up, and select **"Install Download"**. Follow the device prompts step by step. Before confirming the installation, the device will check the vehicle model again.



Image 17



Image 18

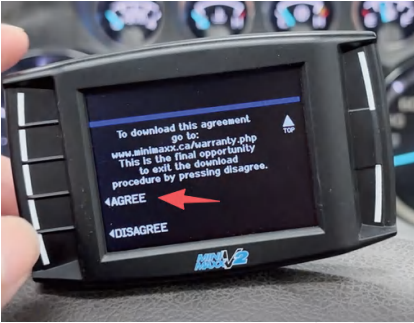


Image 19

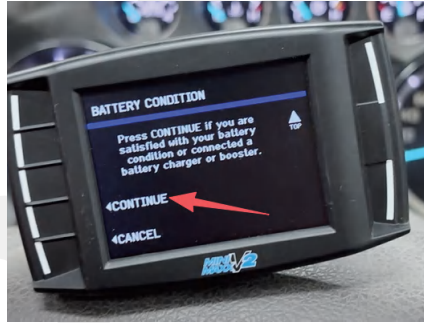


Image 20

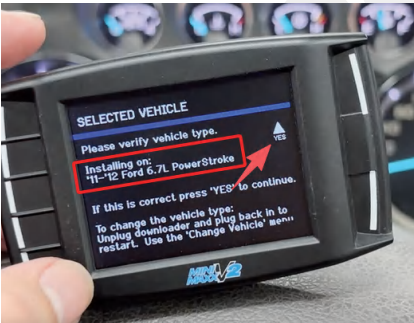


Image 21



Image 22

- Turn key to the "OFF" — CONTINUE

After the message "[Turn key to the "OFF"]" appears, turn the ignition key to the "LOCK" position.

Once the vehicle is off, click "CONTINUE".

- Turn key to the "RUN" — **CONTINUE**

After the message "[Turn key to the "RUN"]" appears, turn the ignition key to the "ON" position (do not start the engine), then click "CONTINUE".

Please make sure the vehicle model is consistent. After the program installation is complete, the device will restart automatically. Please wait patiently, about **15 minutes**.



Image 23



Image 24



Image 25



Image 26



Image 27



Image 28



Image 29



Image 30

## STEP 7

Confirm installation completion

**Menu** — **Show Settings** — **Status** — **Installed**

Tap the **MENU** button in the upper-left corner to enter the menu. Press the lower-right button to scroll down, find the **"Show Setting"** option, and select it. Check the device information and confirm that the program has been installed successfully.

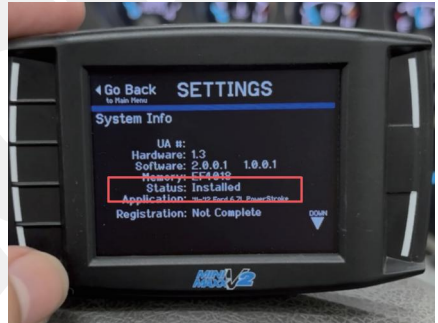


Image 31

## STEP 8

Device power switch setting — keyed power

During program installation, the device power supply uses **“Battery”**. For daily use, the device power supply mode needs to be switched to **“keyed power”**.

- i. Connect the power cord from Appendix 2 to the power control box. (Image 32)
- ii. Pass the other end of the power cord through the vehicle firewall and connect it to the ACC power supply in the fuse box. (Image 32)
- iii. Switch the power control box to the KEY position. (Image 33)

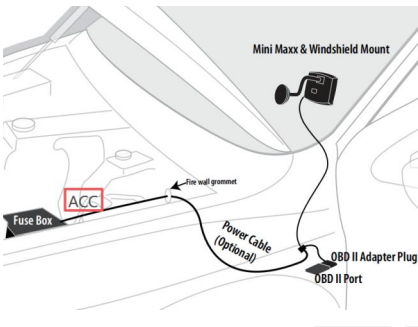


Image 32

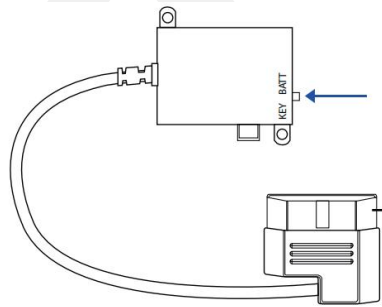


Image 33

Finally, the device will be turned on/off with the vehicle key switch.

## STEP 9

Start the vehicle and let it idle for 5 minutes. Confirm that there are no warning lights.



Image 34

## **STEP 10**

The Tuner installation is complete. After the engine cools down, the emissions system hardware removal work can be performed.

**SUNCENT**