

SUNCENT

2019-2021 6.7L Cummins 4"

Race Pipe

Installation Manual

 [suncentauto_official](#)

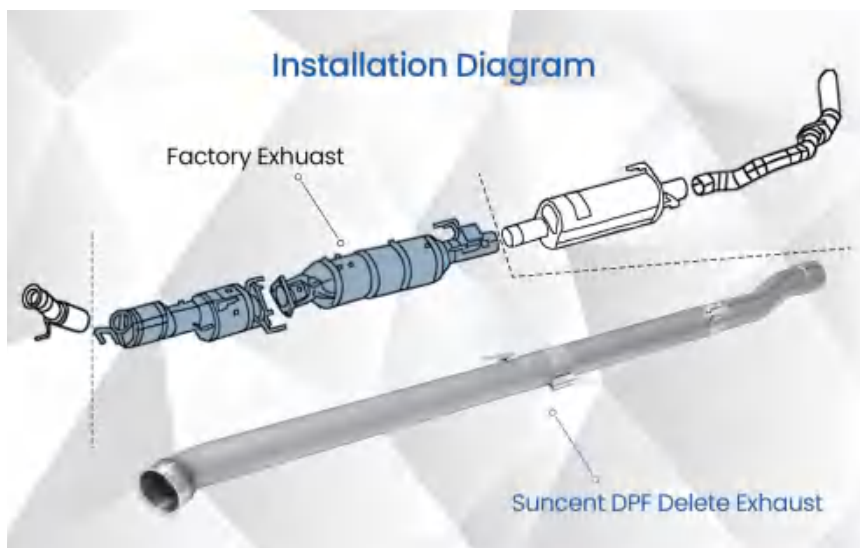
 [Suncentauto.com](#)

 [Suncentauto](#)

 support@suncentauto.com



www.suncentauto.com



Special Precautions:

- (1) The exhaust system is associated with many sensors. The negative terminal of the battery "-" must be disconnected before disassembly.
- (2) The exhaust system is a high-temperature component. It needs to be fully cooled (about 30 minutes after the engine is turned off) before starting the operation.
- (3) Be careful to prevent burns.
- (4) The exhaust system is prone to rust. Be sure to spray rust remover (for example: WD-40) before disassembly to prevent the bolts from getting stuck.

STEP 1

Disconnect the vehicle battery.

STEP 2

Spray the exhaust flange bolts and exhaust hooks with rust remover (let it stand for 10 minutes).



Image 1

STEP 3

Lubricate the hook at the end of the exhaust system to make room for the subsequent removal of OE parts.



Image 2



Image 3

STEP 4

Remove the flange screws, exhaust hooks, and clamps in the middle section of the exhaust, pull the middle section down and hold it with your body.



Image 4



Image 5

STEP 5

Unplug the exhaust aftertreatment system sensor plug and wiring harness fixing buckle (DOC\DPF\DEF\SCR).



Image 6



Image 7

STEP 6

Remove the two 13mm bolts and hook bracket of the DPF rear side fixing bracket.



Image 8

STEP 7

Remove the hook bracket on the front side of the DPF and remove the screws of the V-band clamp.



Image 9

STEP 8

Unplug the exhaust aftertreatment system sensor plug and harness fixing buckle (DOC\DPF\DEF\SCR).

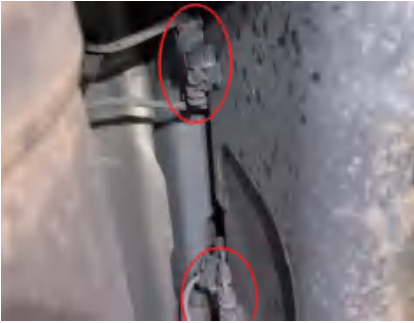


Image 10



Image 11

STEP 9

Pull the DPF backward.



Image 12

Install Race Pipe:

STEP 10

Connect the front section of the Delete pipe and fix it with the Downpipe, and install the straight pipe hook.



Image 13



Image 14



Image 15

STEP 11

Use the clamp to connect the remaining Delete pipes in sequence, adjust the Delete pipes according to the wheelbase, and pre-tighten the clamp.



Image 16



Note: Do not completely tighten the clamp in this step, because the exhaust outlet clearance needs to be adjusted later.

STEP 12

Adjust the position of the clamp from front to back and tighten it.