



2019-2021 6.7L Cummins 4"

Downpipe-Back Exhaust

Installation Manual

 [suncentauto_official](#)

 [Suncentauto.com](#)

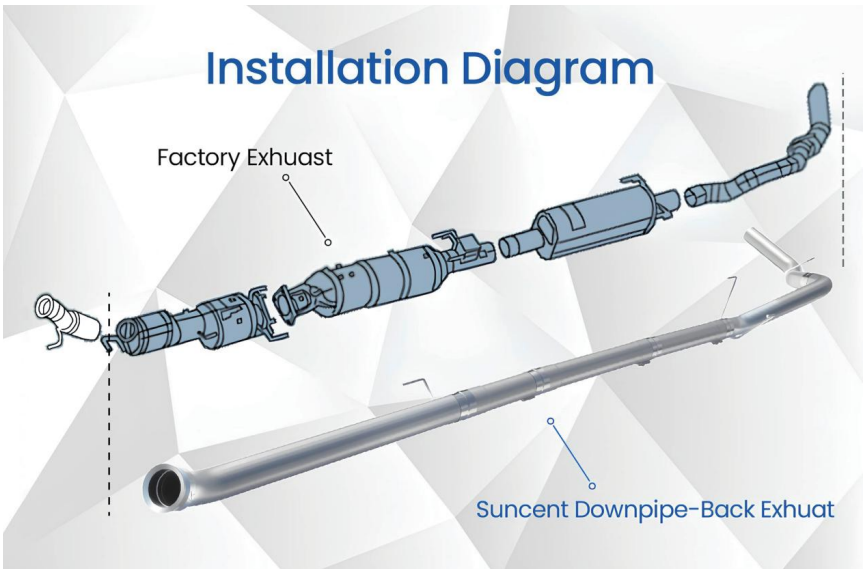
 [Suncentauto](#)

 support@suncentauto.com



www.suncentauto.com

Installation Diagram



Special Precautions:

- (1) The exhaust system is associated with many sensors. The negative terminal of the battery "-" must be disconnected before disassembly.
- (2) The exhaust system is a high-temperature component. It needs to be fully cooled (about 30 minutes after the engine is turned off) before starting the operation.
- (3) Be careful to prevent burns.
- (4) The exhaust system is prone to rust. Be sure to spray rust remover (for example: WD-40) before disassembly to prevent the bolts from getting stuck.

STEP 1

Disconnect the vehicle battery.

STEP 2

Spray the exhaust flange bolts and exhaust hooks with rust remover (let stand for 10 minutes).

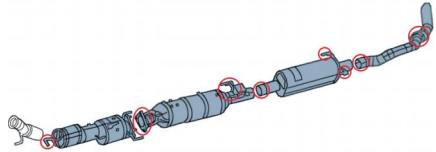


Image 1

STEP 3

Remove the clamps and hooks at the tail section of the exhaust system and take out the tail section.

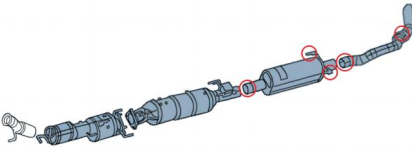


Image 2



Image 3

STEP 4

Remove the flange screws at the middle and front sections of the exhaust, lower the DPF to a certain height, and reserve space for removing the sensor (a jack is required to support the DPF to prevent the sensor harness from being pulled or broken).

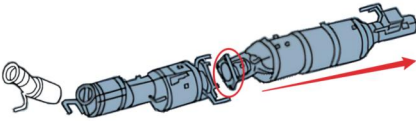


Image 4



Image 5

STEP 5

Unplug the exhaust aftertreatment system sensor plug and harness fixing buckle (DOC\DPF\DEF\SCR).

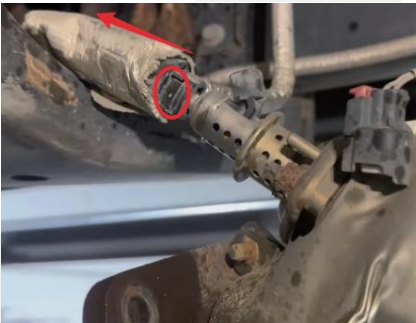


Image 6



Image 7

STEP 6

Remove the two 13mm bolts and hook bracket of the DPF rear side fixing bracket.



Image 8

STEP 7

Remove the hook bracket on the front side of the DPF and remove the screws of the V-band clamp.



Image 9

STEP 8

Unplug the exhaust aftertreatment system sensor plug and harness fixing buckle (DOC\DPF\DEF\SCR).



Image 10

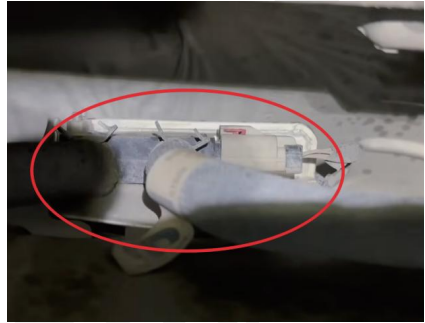


Image 11

STEP 9

Pull the DPF backward.

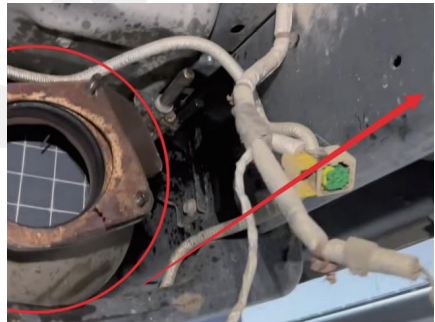


Image 12

Install 5 Inch Downpipe-Back DPF Delete:

STEP 10

Connect the front section of the Delete pipe to the Downpipe and fix it, and install the straight pipe hook.



Image 13



Image 14



Image 15

STEP 11

Install the straight pipe hook, use the clamp to connect the remaining Delete pipes in the following order, adjust the Delete pipe according to the wheelbase, and pre-tighten the clamp.



Image 16



Note: Do not completely tighten the clamp in this step, because the exhaust outlet gap needs to be adjusted later.

STEP 12

Adjust the position of the clamp from front to back and tighten it.

SUNCENT
AUTO.COM