



2017-2023 Duramax L5P

Race Pipe

Installation Manual

 [suncentauto_official](#)

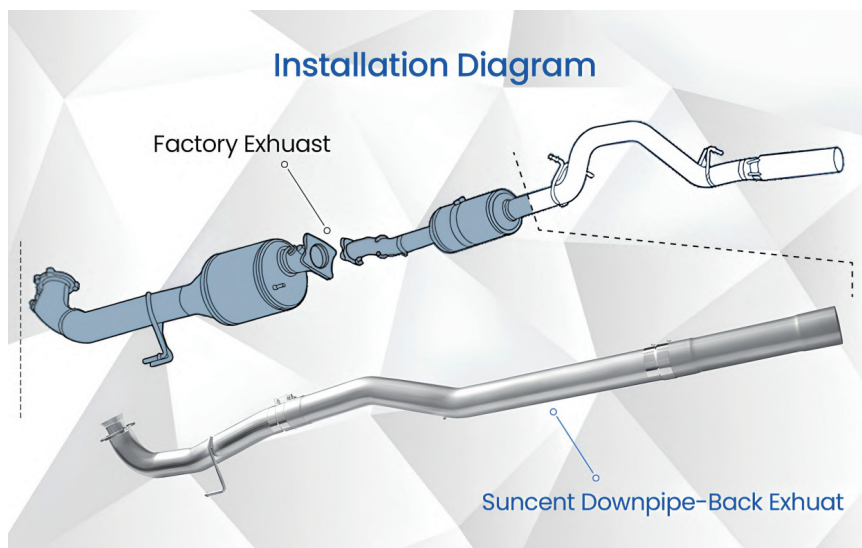
 [Suncentauto.com](#)

 [Suncentauto](#)

 support@suncentauto.com



www.suncentauto.com



Special Precautions:

- (1) The exhaust system is associated with many sensors. The negative terminal of the battery "-" must be disconnected before disassembly.
- (2) The exhaust system is a high-temperature component. It needs to be fully cooled (about 30 minutes after the engine is turned off) before starting the operation.
- (3) Be careful to prevent burns.
- (4) The exhaust system is prone to rust. Be sure to spray rust remover (for example: WD-40) before disassembly to prevent the bolts from getting stuck.

STEP 1

Disconnect the vehicle battery.

STEP 2

Spray rust remover on the exhaust flange bolts and exhaust hook (let it sit for 10 minutes).

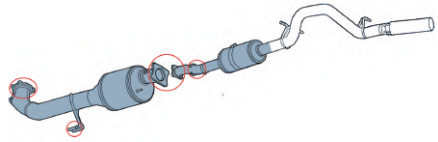


Image 1

STEP 3

Remove the exhaust aftertreatment system sensor plugs and wiring harness clips (DOC, DPF, DEF, SCR).



Image 2

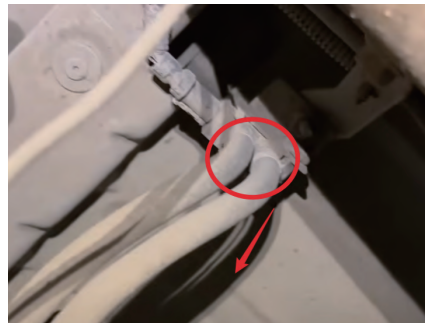


Image 3

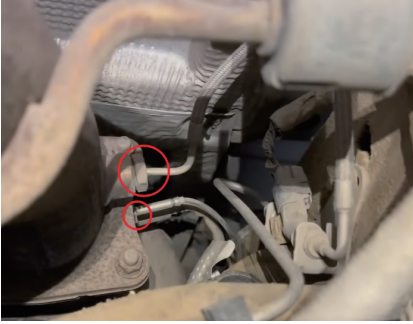


Image 4



Image 5

STEP 4

Remove the flange screws at the front of the DPF and the original exhaust hook.

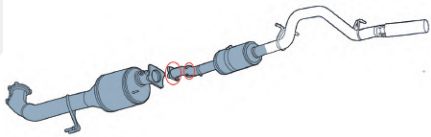


Image 6

STEP 5

Use a saw to separate the DPF from the rear exhaust tailpipe and pull the DPF out toward the rear of the vehicle.

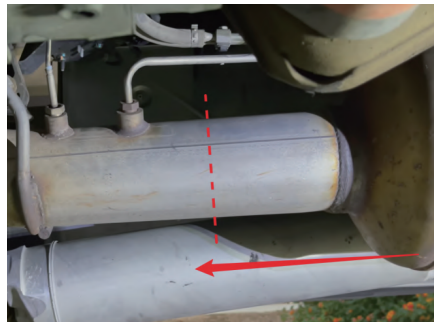


Image 7



Note: The cut must be at least X mm from the tailpipe sensor.

STEP 6

Use a saw to separate the front end of the exhaust pipe from the CAT.

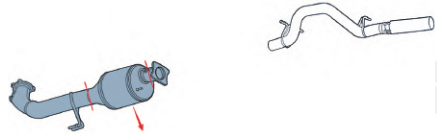


Image 8



Note: If you need to replace the OE fittings later, you can remove the crossmembers in front and behind the CAT and remove the remaining exhaust pipe (estimated to add 2 hours to the work).

STEP 7

Loosen the bolts/clamps at the front of the exhaust aftertreatment system and remove the remaining exhaust system at the front.



Image 9



Image 10

Install the Race Pipe:

STEP 8

Install the race pipe front clamp.

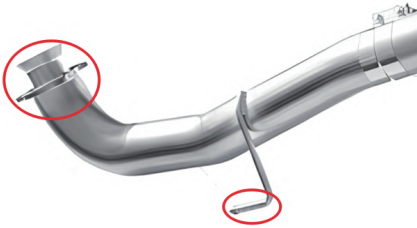


Image 11



Image 12

STEP 9

Connect the race pipe with the clamp. Install the straight pipe hooks at the front and middle sections of the pipe.

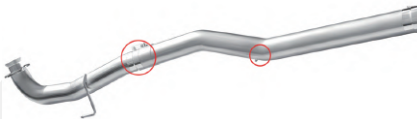


Image 13



Image 14



Note: Do not fully tighten the clamps at this step, as the exhaust outlet clearance will need to be adjusted later.

STEP 10

Connect the race pipe to the remaining factory end using the clamps. Adjust the race pipe according to the wheelbase and pre-tighten the clamps.

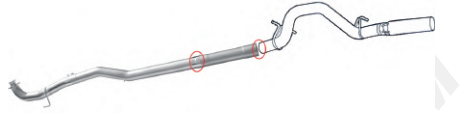


Image 15



Note: Do not fully tighten the clamps at this step, as the exhaust outlet clearance will need to be adjusted later.

STEP 11

Adjust the clamps from front to back and tighten.