



2017-2019 L5P 6.6L Duramax 5"

Downpipe-Back Exhaust

Installation Manual

 [suncentauto_official](#)

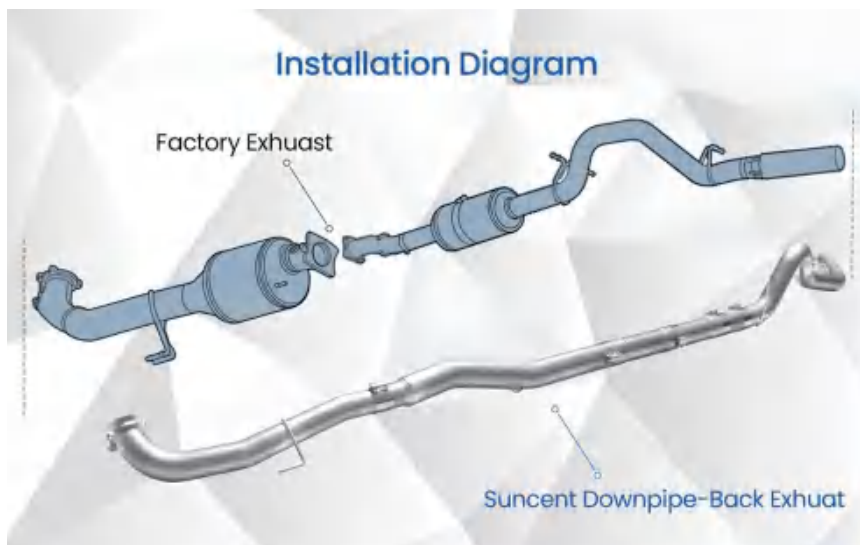
 [Suncentauto.com](#)

 [Suncentauto](#)

 support@suncentauto.com



www.suncentauto.com



Special Precautions:

- (1) The exhaust system is associated with many sensors. The negative terminal of the battery "-" must be disconnected before disassembly.
- (2) The exhaust system is a high-temperature component. It needs to be fully cooled (about 30 minutes after the engine is turned off) before starting the operation.
- (3) Be careful to prevent burns.
- (4) The exhaust system is prone to rust. Be sure to spray rust remover (for example: WD-40) before disassembly to prevent the bolts from getting stuck.

STEP 1

Disconnect the vehicle battery.

STEP 2

Spray the exhaust flange bolts and exhaust hooks with rust remover (let stand for 10 minutes).

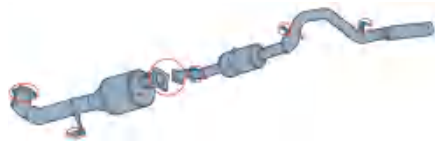


Image 1

STEP 3

Unplug the exhaust
aftertreatment system sensor
plug and harness fixing clip.
(DOC\DPF\DEF\SCR)



Image 2

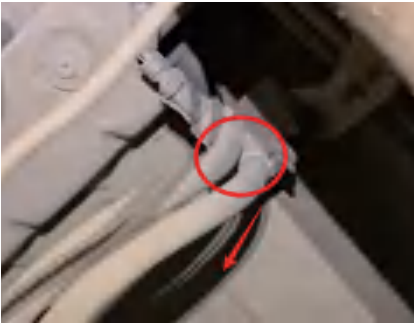


Image 3



Image 4



Image 5

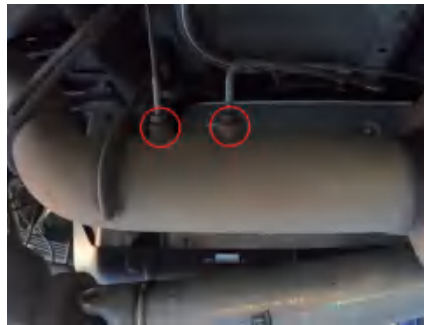


Image 6

STEP 4

Remove the flange screws at the front end of the DPF and remove the original exhaust hook.



Image 7

STEP 5

Use a cutting saw to cut off the DPF and the rear exhaust tail pipe, and pull the exhaust tail section and DPF toward the rear of the vehicle.

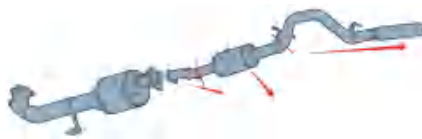


Image 8



Image 9



Note: If you need to replace the OE pipes later, you can choose to remove the crossbeams before and after the CAT and take out the remaining exhaust pipes (estimated to increase the working hours by 3 hours).

STEP 6

Use a cutting saw to cut off the front end of the exhaust pipe and the CAT, and pull the CAT out from the bottom.



Image 10

STEP 7

Remove the front flange screws and exhaust hooks, and remove the remaining exhaust system at the front end.



Image 11



Image 12

Install 5 Inch 5" Downpipe-Back Exhaust:

STEP 8

Use the clamp to connect the front section and middle section of the Race Pipe, and install the straight pipe hook.



Image 13



Image 14

STEP 9

Use the clamp to connect the front section and middle section of the Race Pipe, and install the straight pipe hook.



Image 15



Image 16



Note: Do not tighten the clamp completely in this step, and adjust the exhaust outlet clearance.

STEP 10

Pre-install the tail end delete pipe and install the tail section straight pipe hook.



Image 17

STEP 11

Use the clamp to connect the front section and the tail section of the delete pipe, adjust the delete pipe according to the wheelbase, and pre-tighten the clamp.



Image 18



Note: Do not tighten the clamp completely in this step, because the exhaust outlet clearance needs to be adjusted later.

STEP 12

Adjust the clamp position from front to back and tighten it.